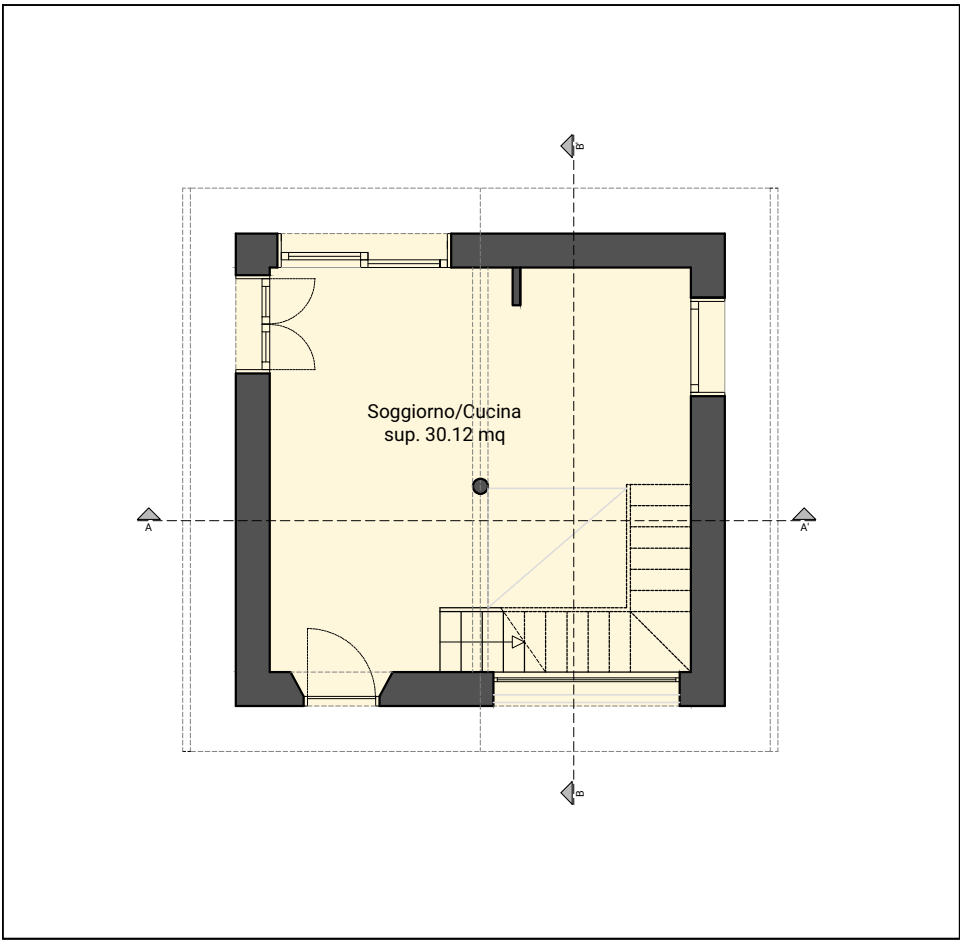
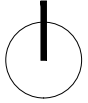
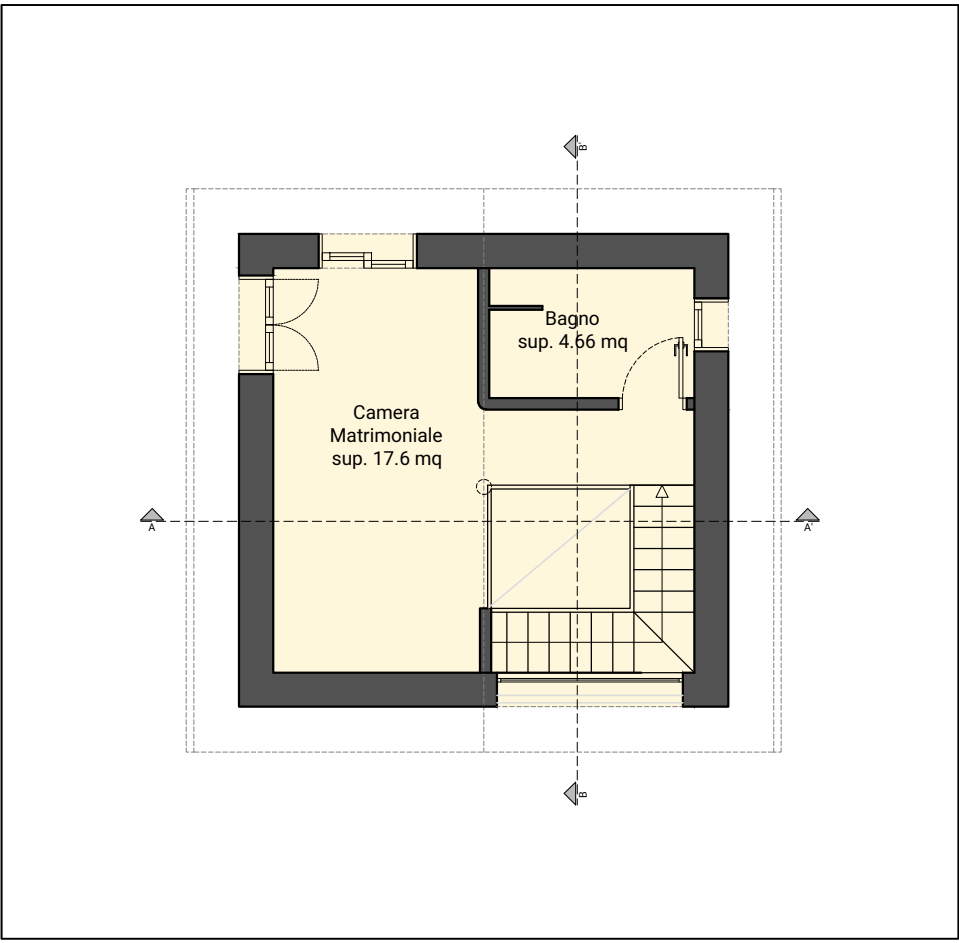


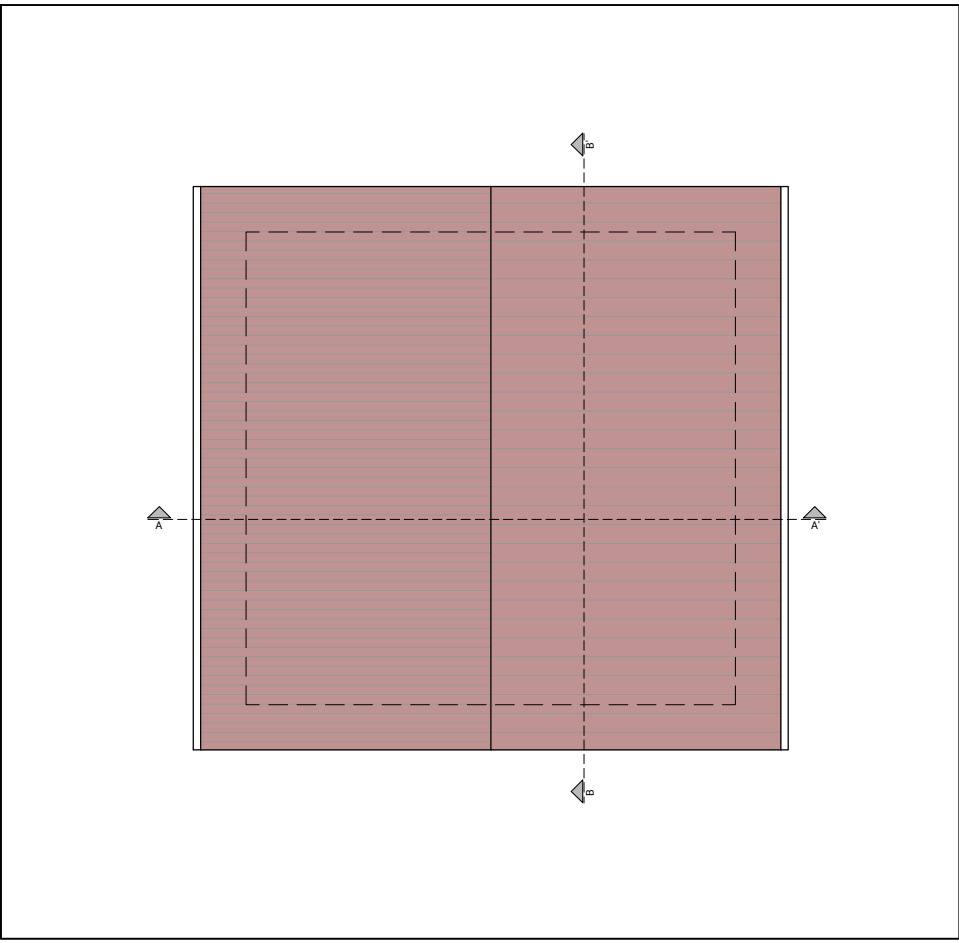
PLANIMETRIA scala 1:500



PIANTA PIANO TERRA



PIANTA PIANO PRIMO



PIANTA DI COPERTURA



luogo: località Rossena, Canossa, Reggio Emilia

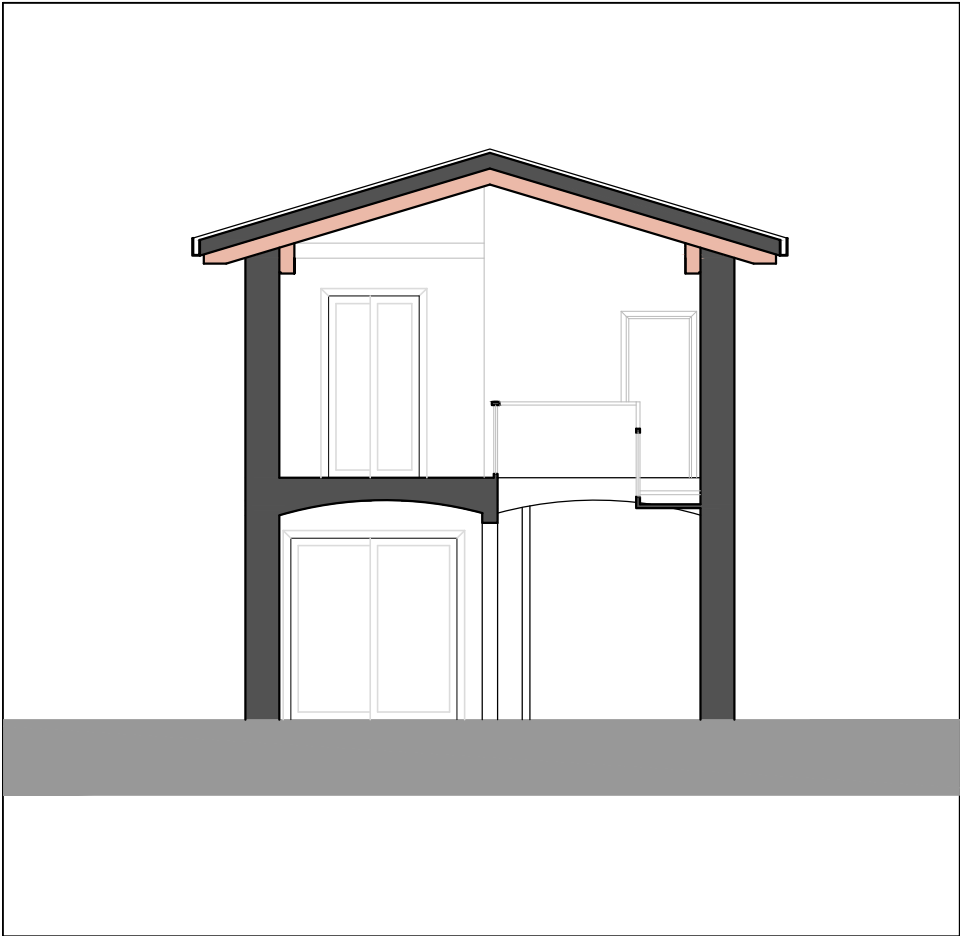
committente: Antichi Poderi di Canossa s.r.l.

progetto architettonico
ARTEAS PROGETTI
architetto Paolo Soragni
con
architetto Ilaria Manotti
architetto Simone Presti

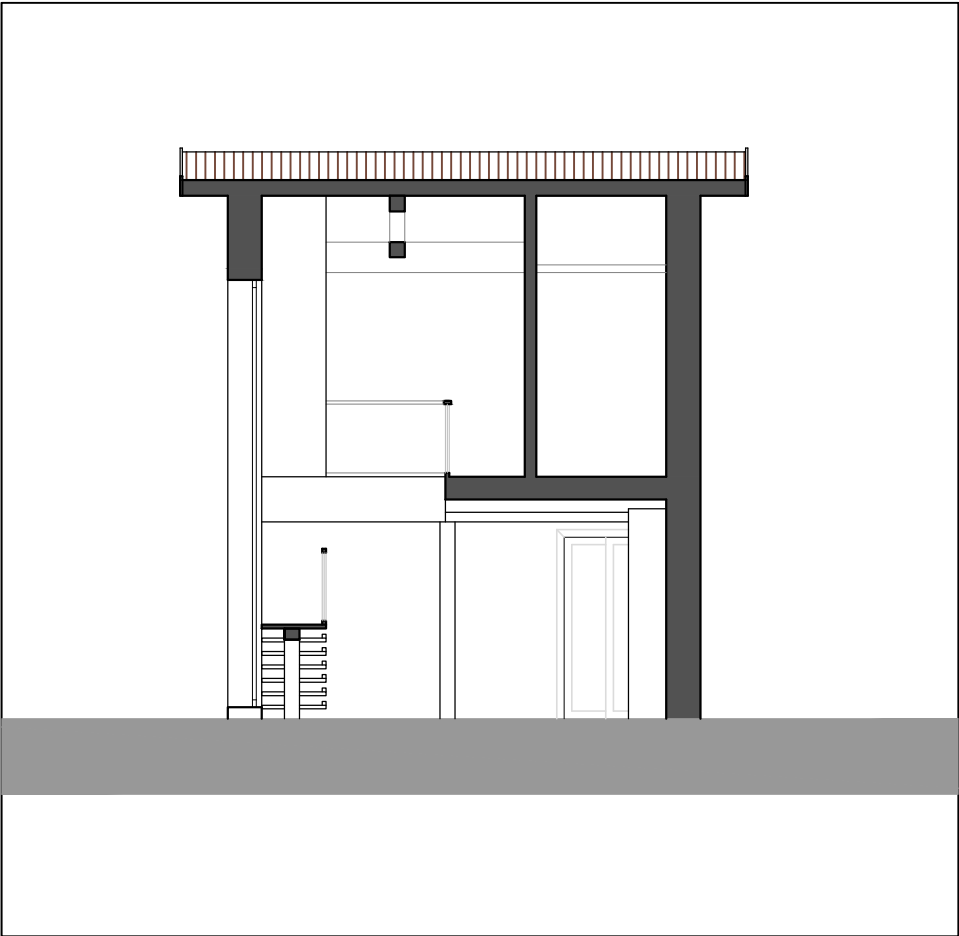
PLANIVOLUMETRICO PER VARIANTE URBANISTICA
EDIFICIO ROSSENA

09
stato di progetto
PIANTE, SEZIONI, PROSPETTI
scala 1:100

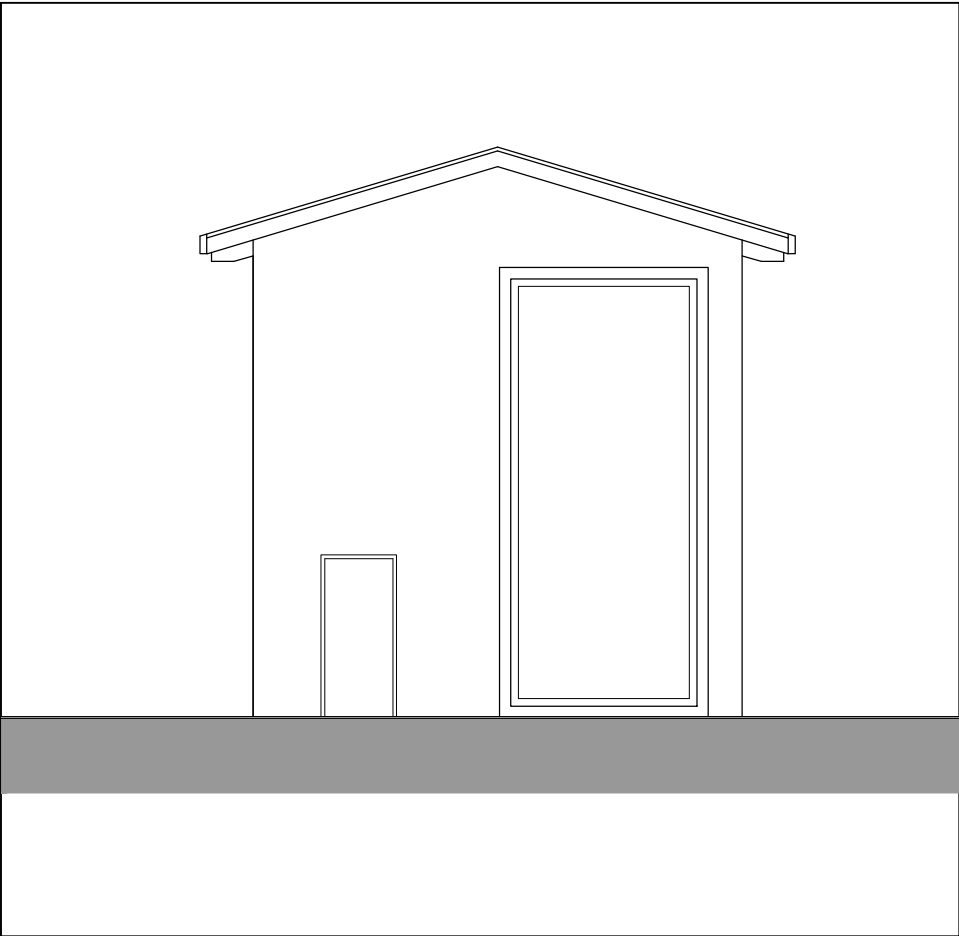
O:\1 Arteas Progetti\2019\14_19 Planivolumetrici Canossa\Progettazione\4 Disegni\5-Edificio Rossena\Edificio Rossena.dwg
10.2019



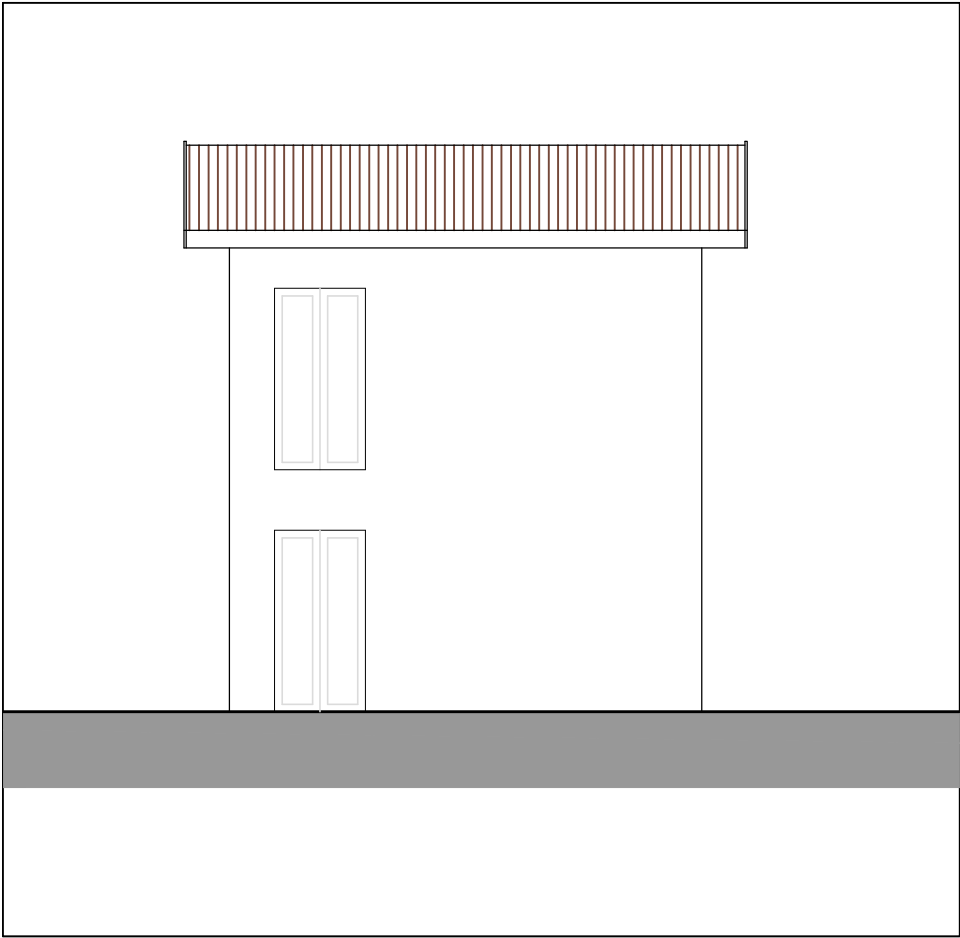
SEZIONE A-A'



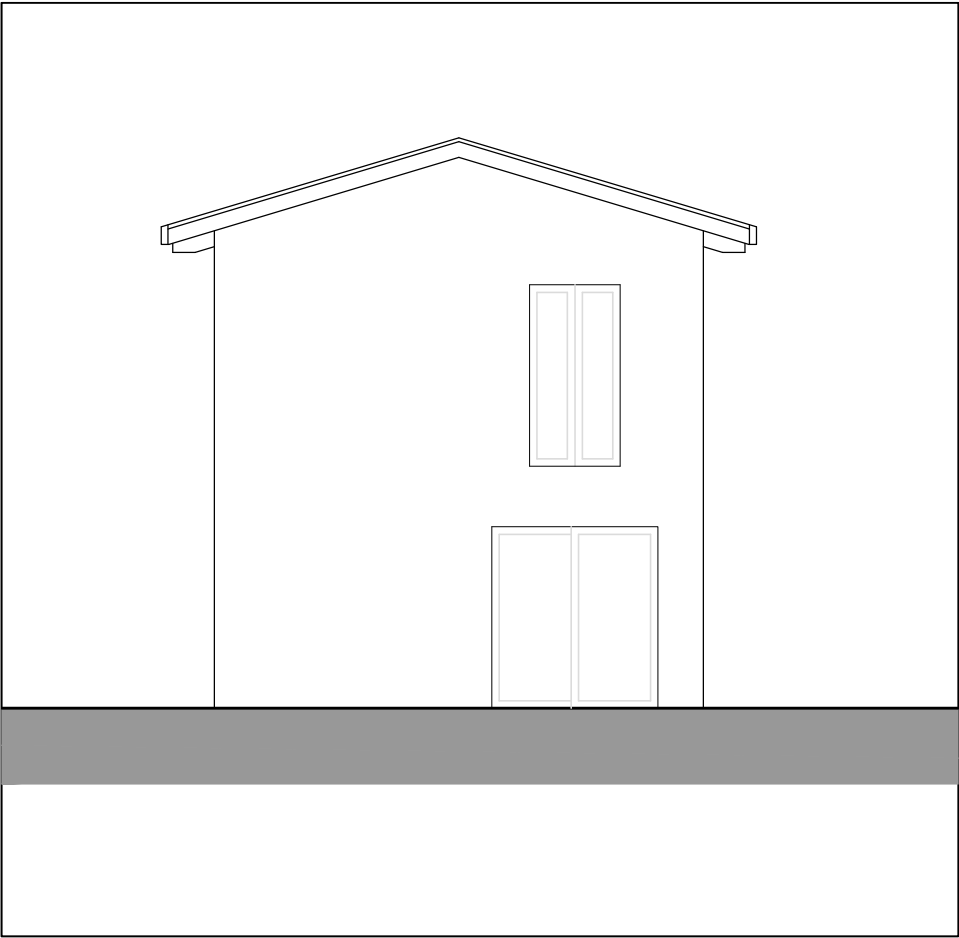
SEZIONE B-B'



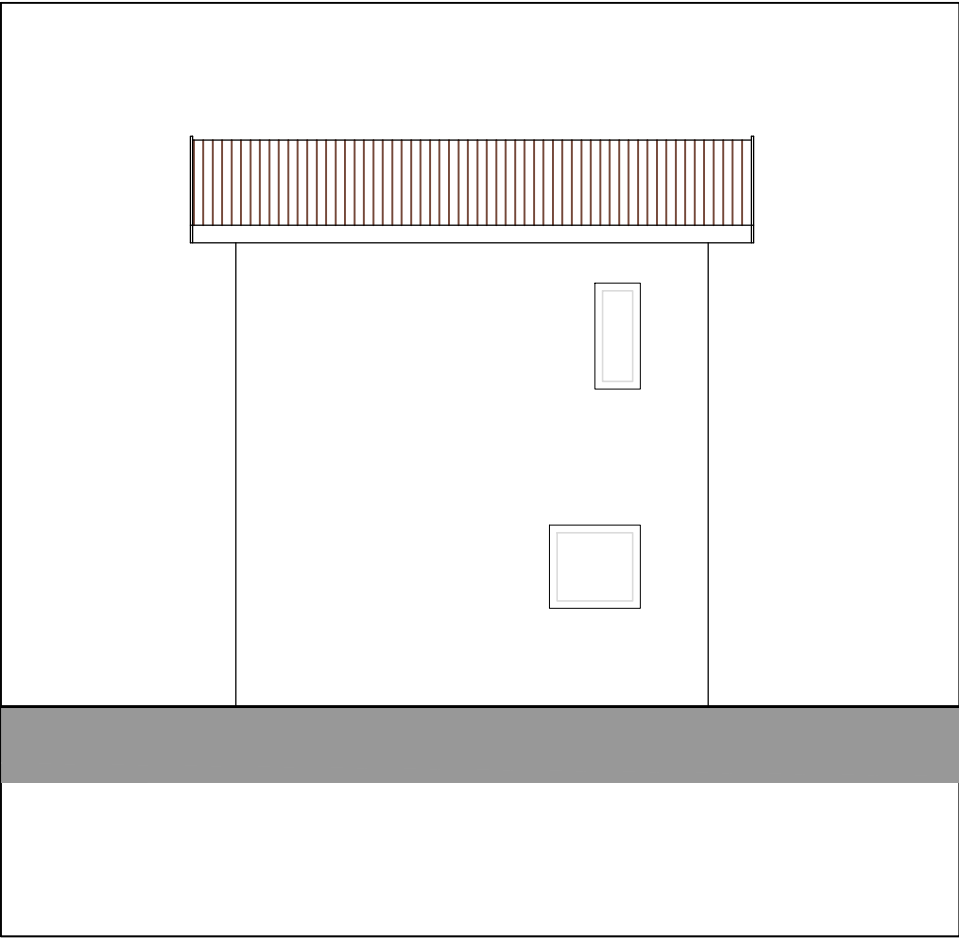
PROSPETTO NORD EST



PROSPETTO SUD EST



PROSPETTO SUD OVEST



PROSPETTO NORD OVEST