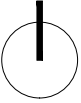
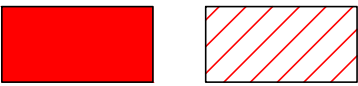


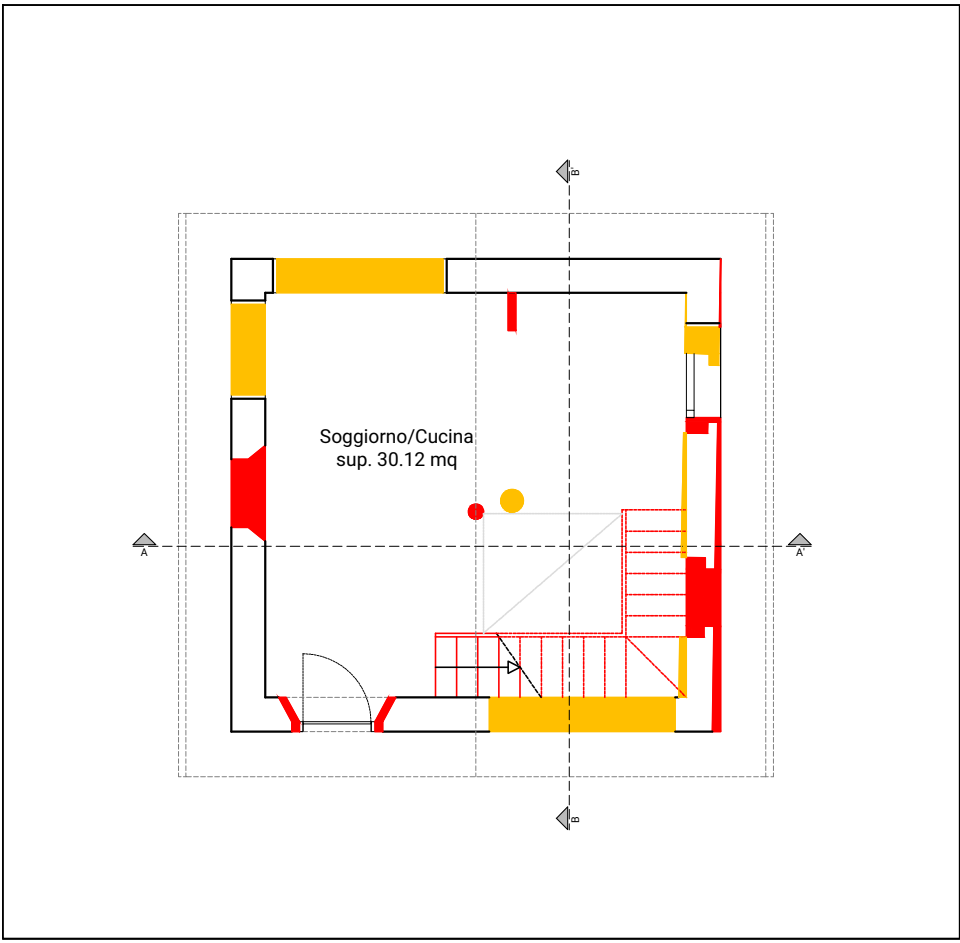
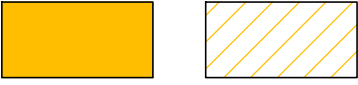
PLANIMETRIA
scala 1:500



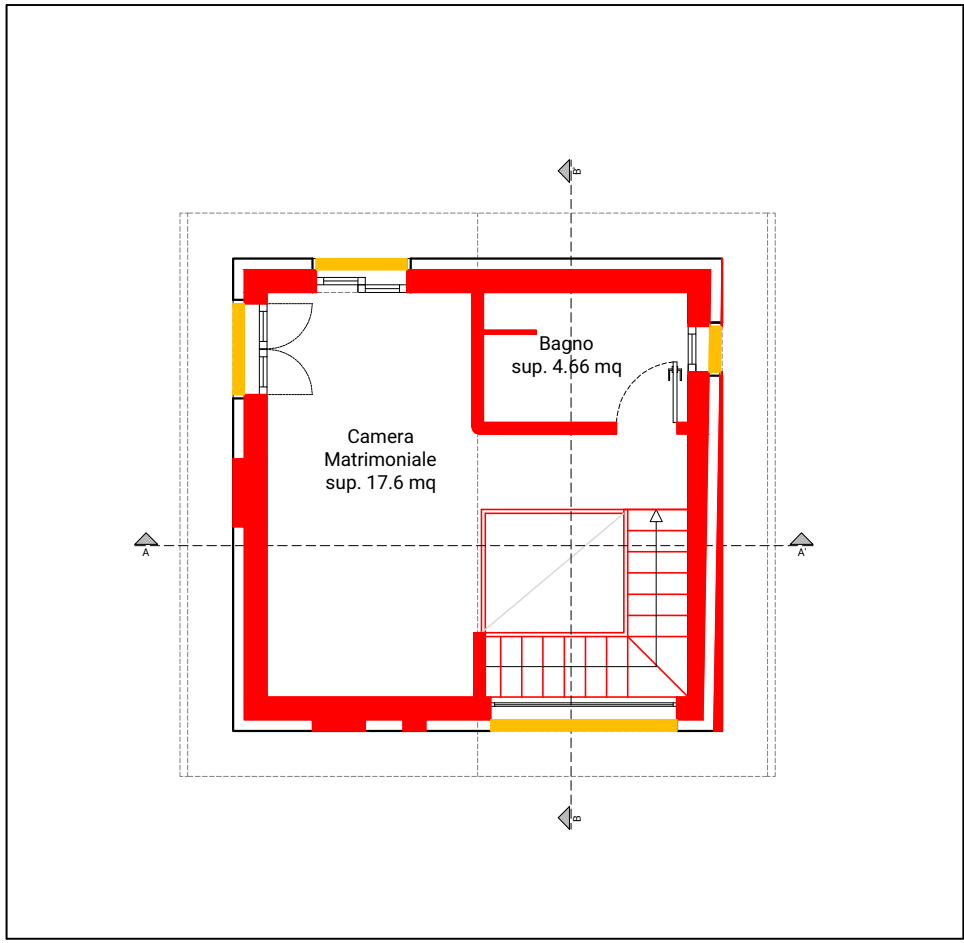
Costruzioni



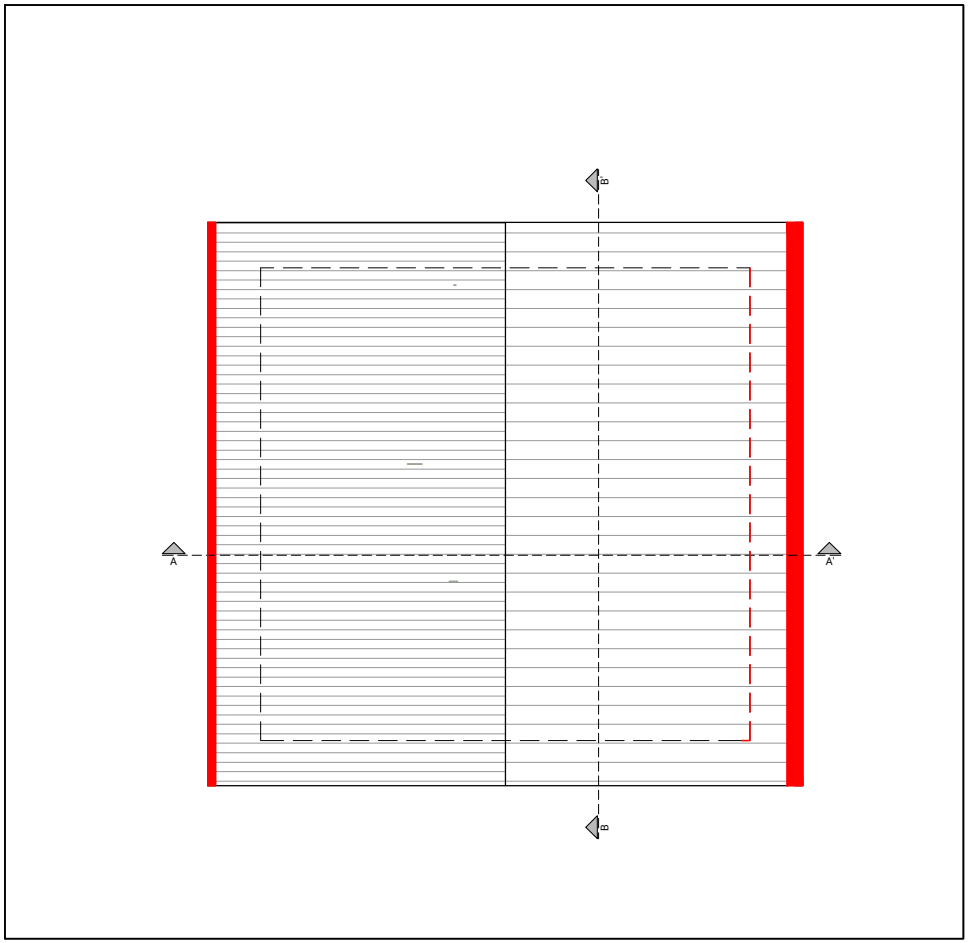
Demolizioni



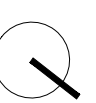
PIANTA PIANO TERRA



PIANTA PIANO PRIMO



PIANTA DI COPERTURA



luogo: località Rossena, Canossa, Reggio Emilia

committente: Antichi Poderi di Canossa s.r.l.

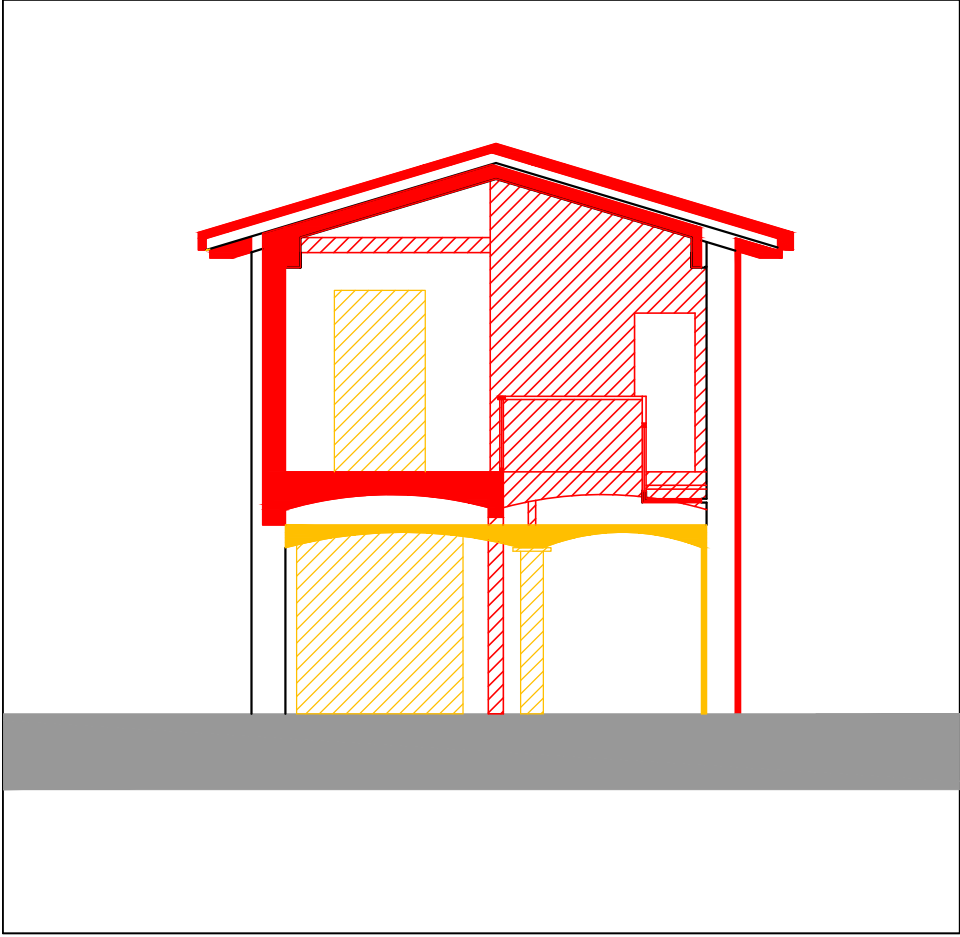
progetto architettonico
ARTEAS PROGETTI
architetto Paolo Soragni
con
architetto Ilaria Manotti
architetto Simone Presti

PLANIVOLUMETRICO PER VARIANTE URBANISTICA
EDIFICIO ROSSENA

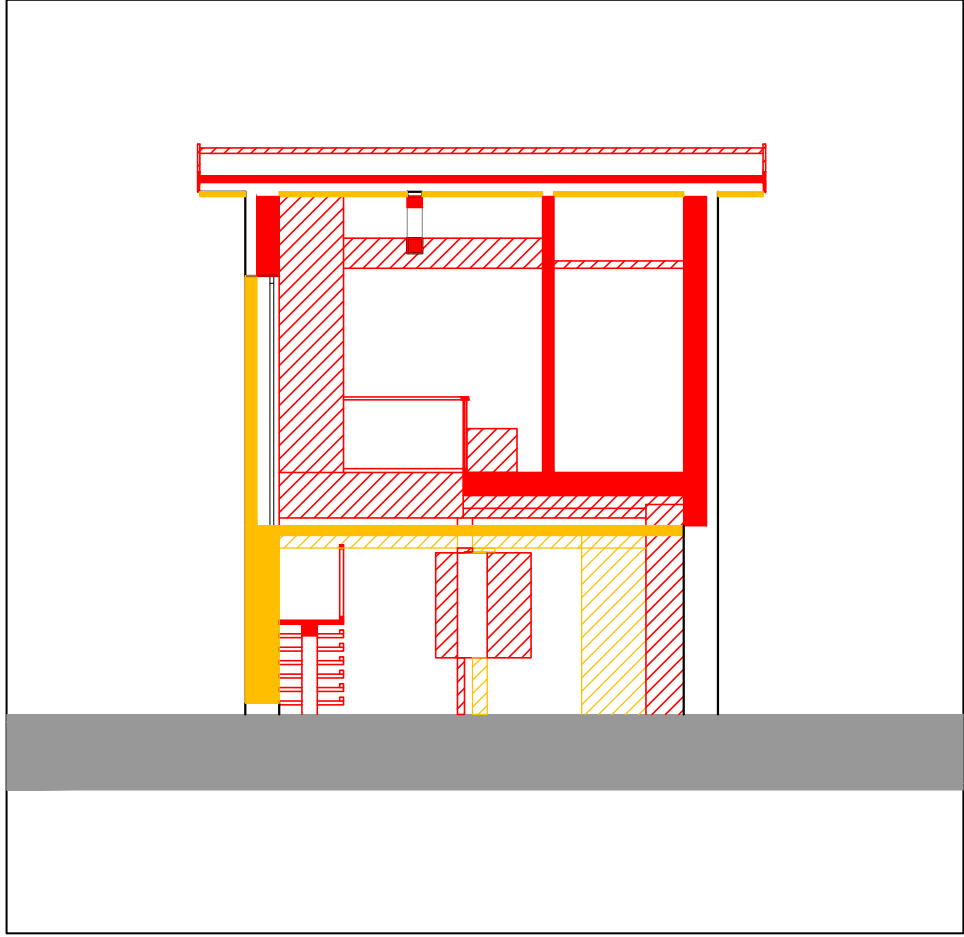
07

gialli - rossi
PIANTE, SEZIONI, PROSPETTI
scala 1:100

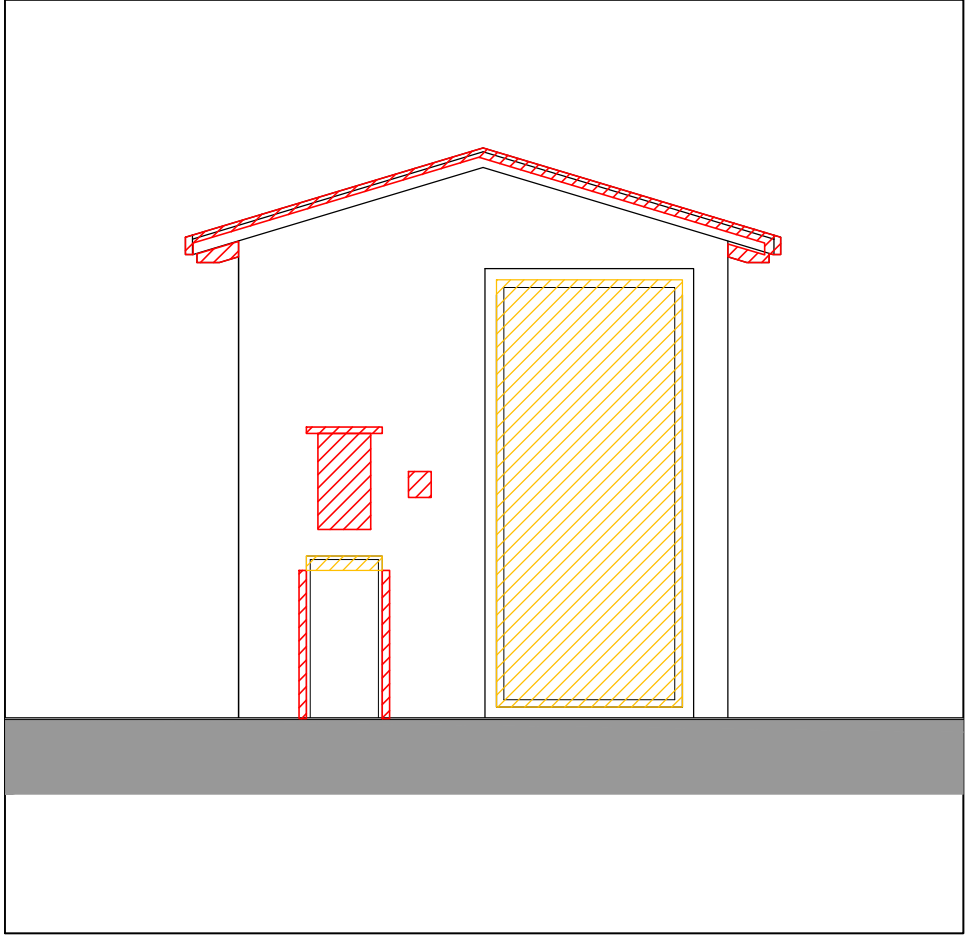
O:\1 Arteas Progetti\2019\14_19 Planivolumetrici Canossa\Progettazione\4 Disegni\5-Edificio Rossena\Edificio Rossena.dwg
10.2019



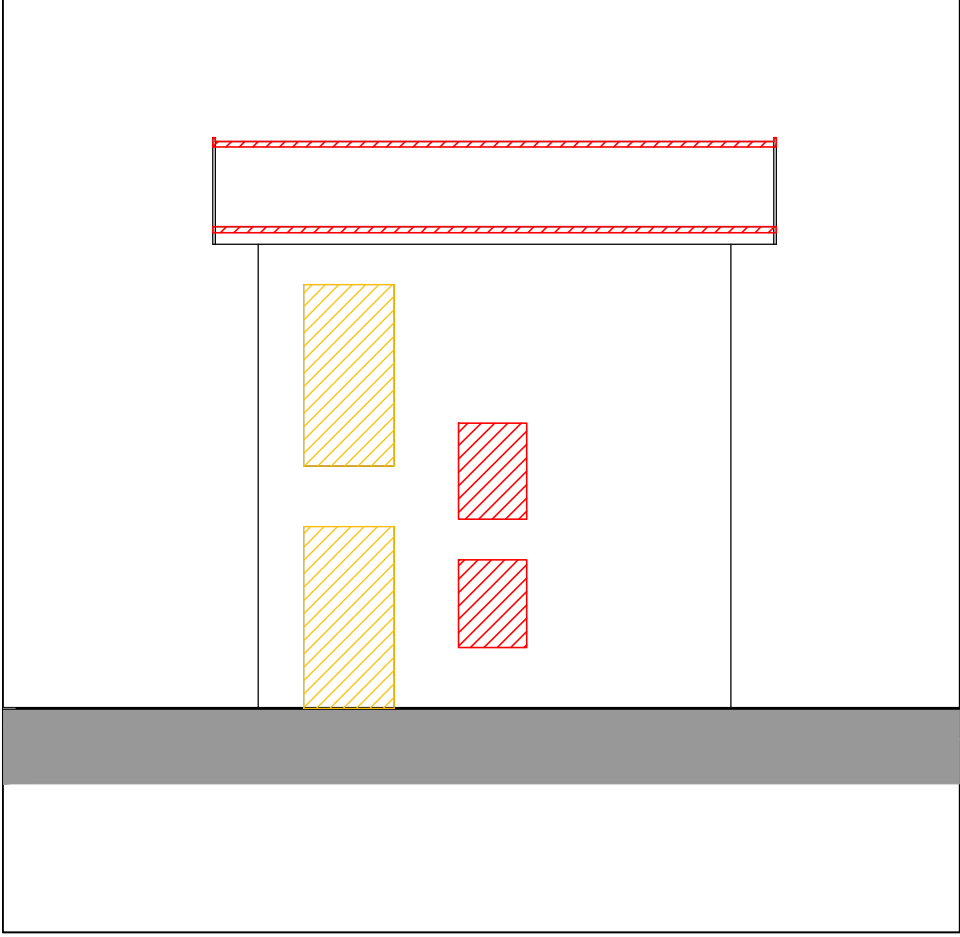
SEZIONE A-A'



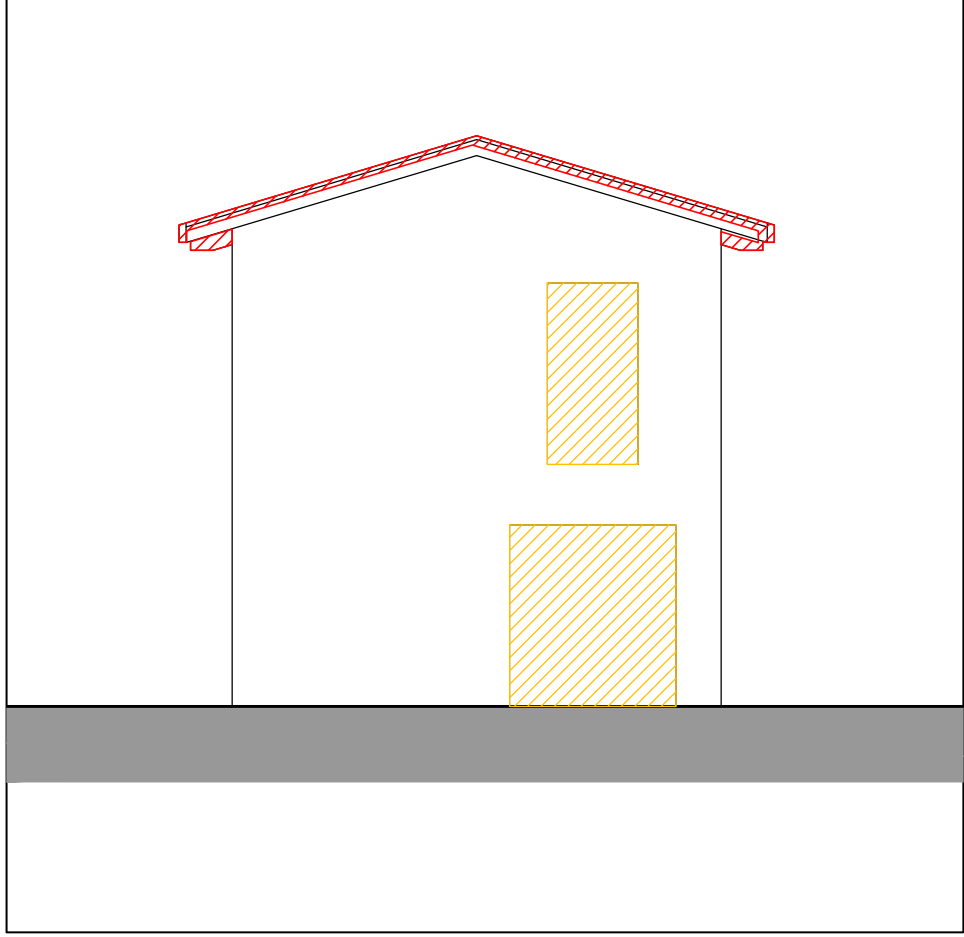
SEZIONE B-B'



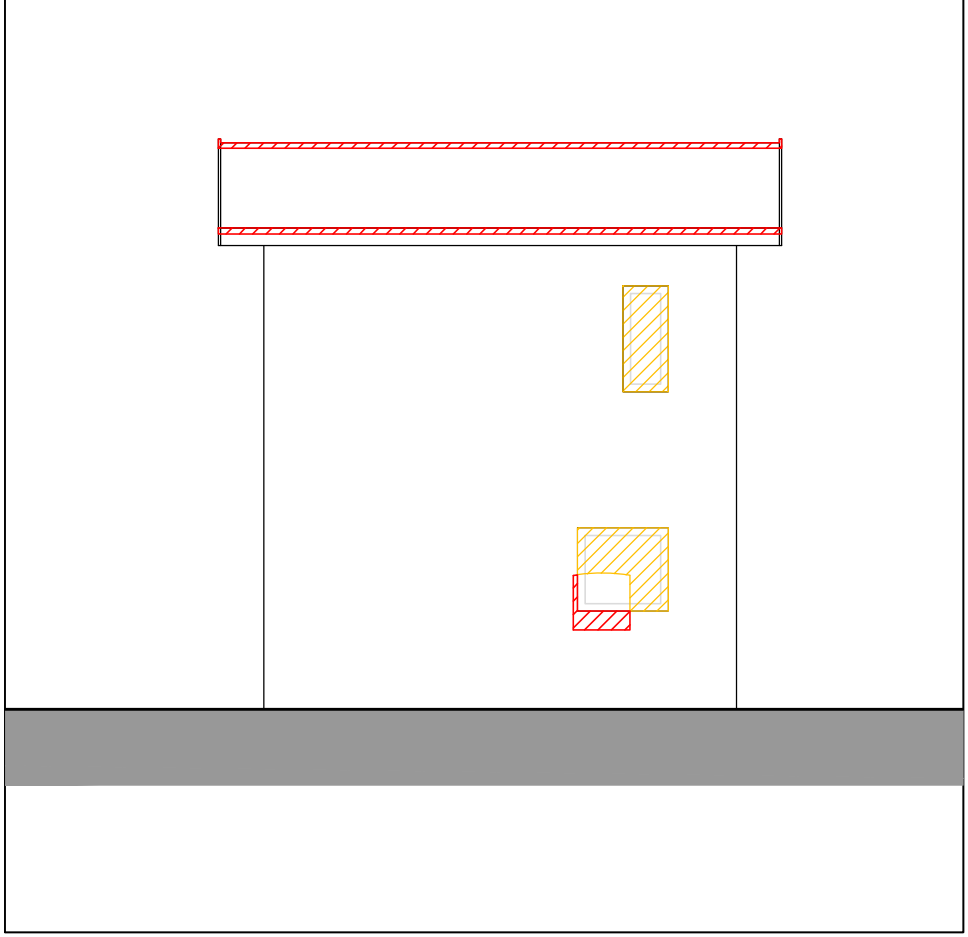
PROSPETTO NORD EST



PROSPETTO SUD EST



PROSPETTO SUD OVEST



PROSPETTO NORD OVEST