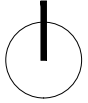


PLANIMETRIA scala 1:500



luogo: località Rossena, Canossa, Reggio Emilia

committente: Antichi Poderi di Canossa s.r.l.

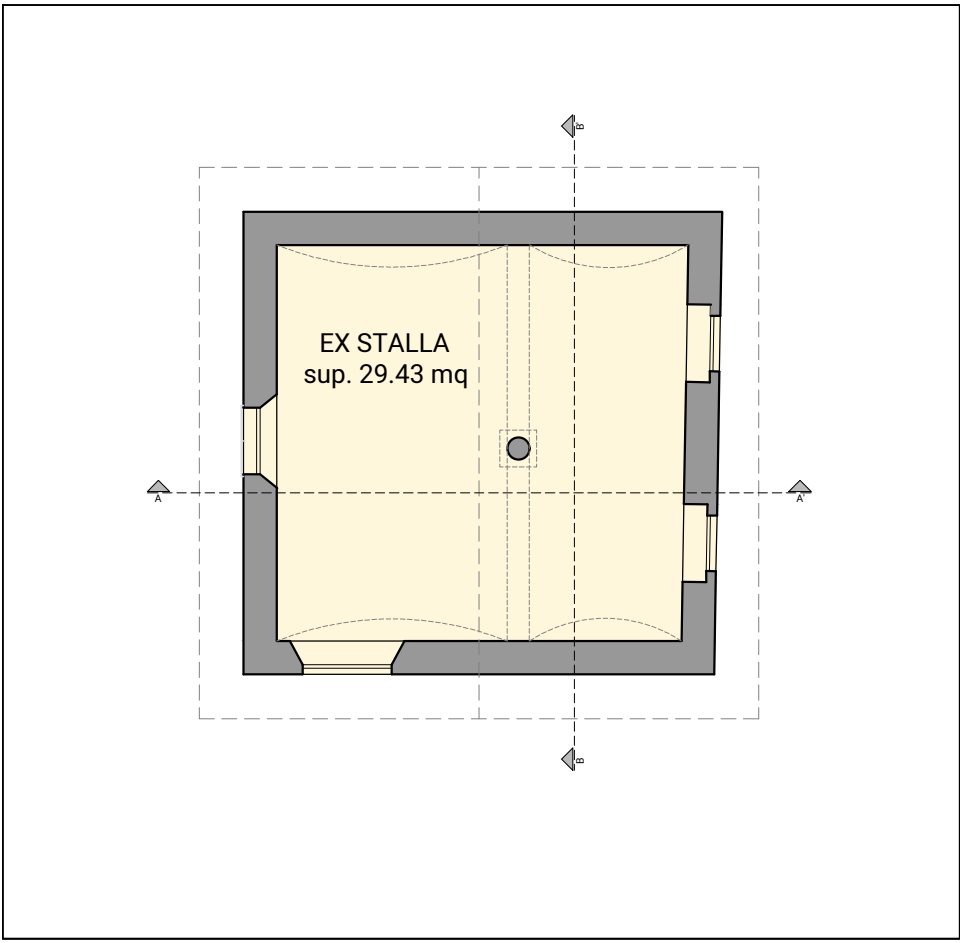
progetto architettonico
ARTEAS PROGETTI
architetto Paolo Soragni
con
architetto Ilaria Manotti
architetto Simone Presti

PLANIVOLUMETRICO PER VARIANTE URBANISTICA
EDIFICIO ROSSENA

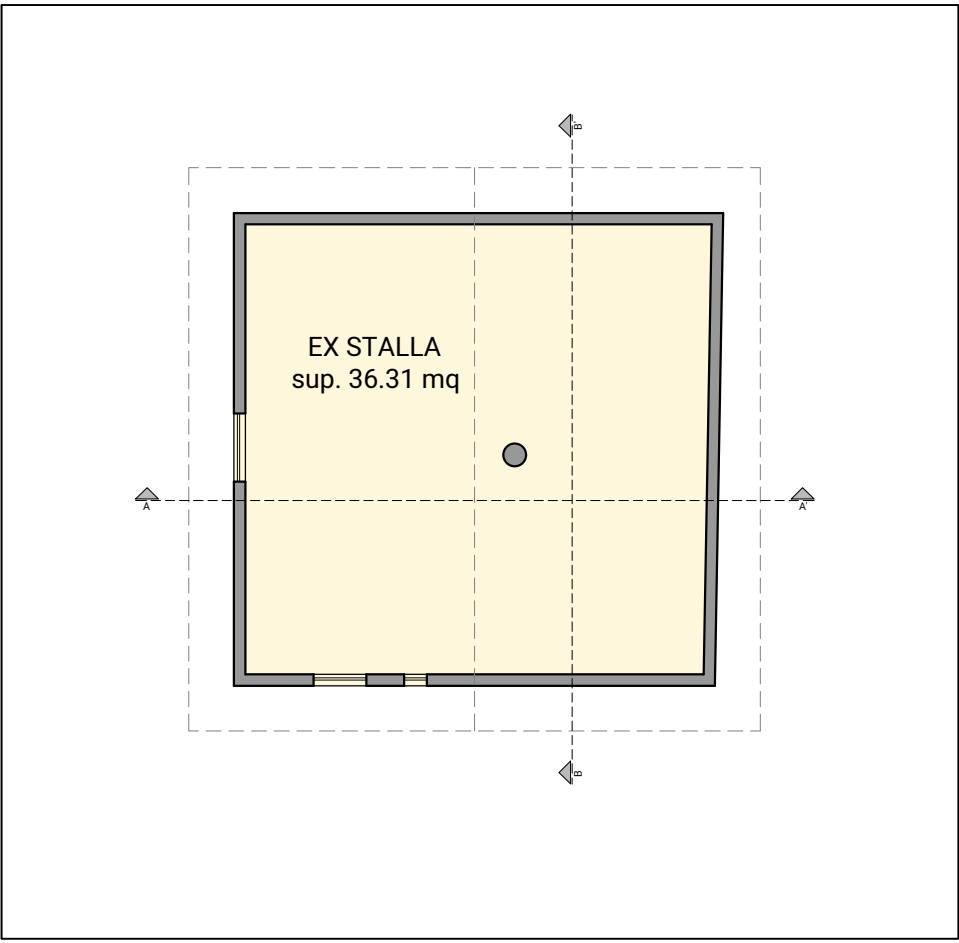
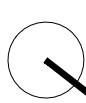
03

stato di fatto
PIANTE, SEZIONI, PROSPETTI
scala 1:100

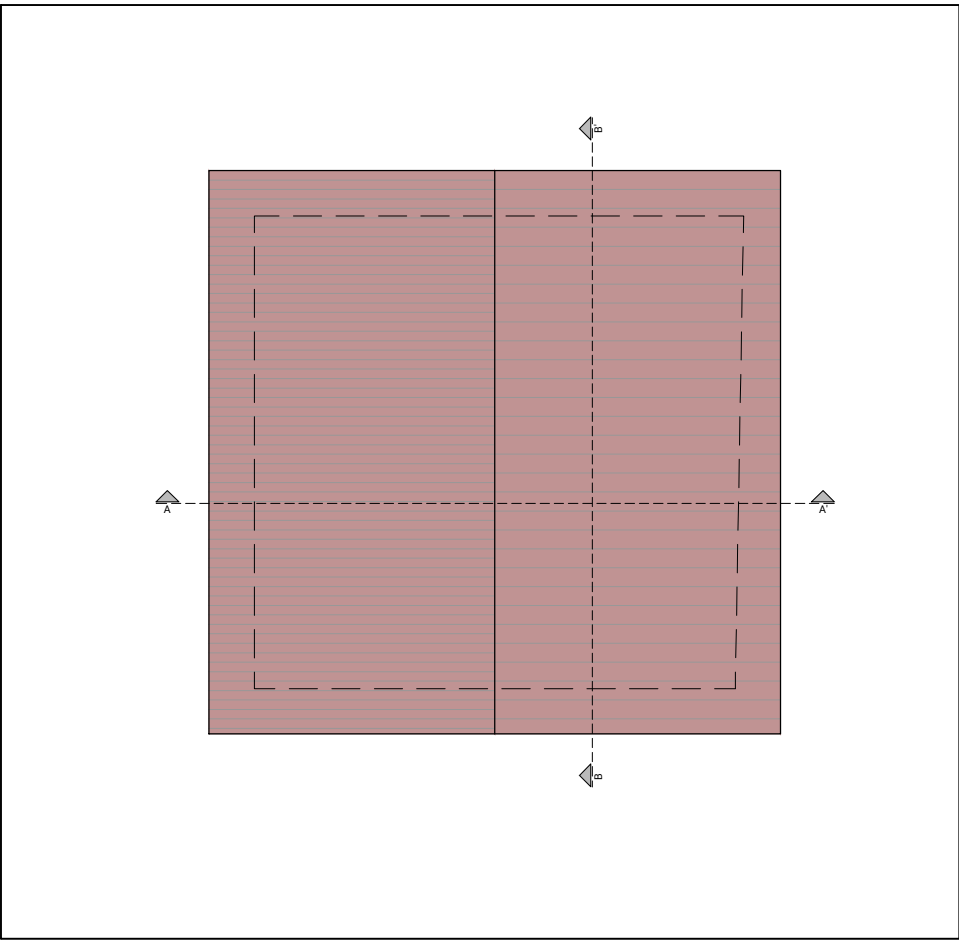
O:\1 Arteas Progetti\2019\14_19 Planivolumetrici Canossa\Progettazione\4 Disegni\5-Edificio Rossena\Edificio Rossena.dwg
10.2019



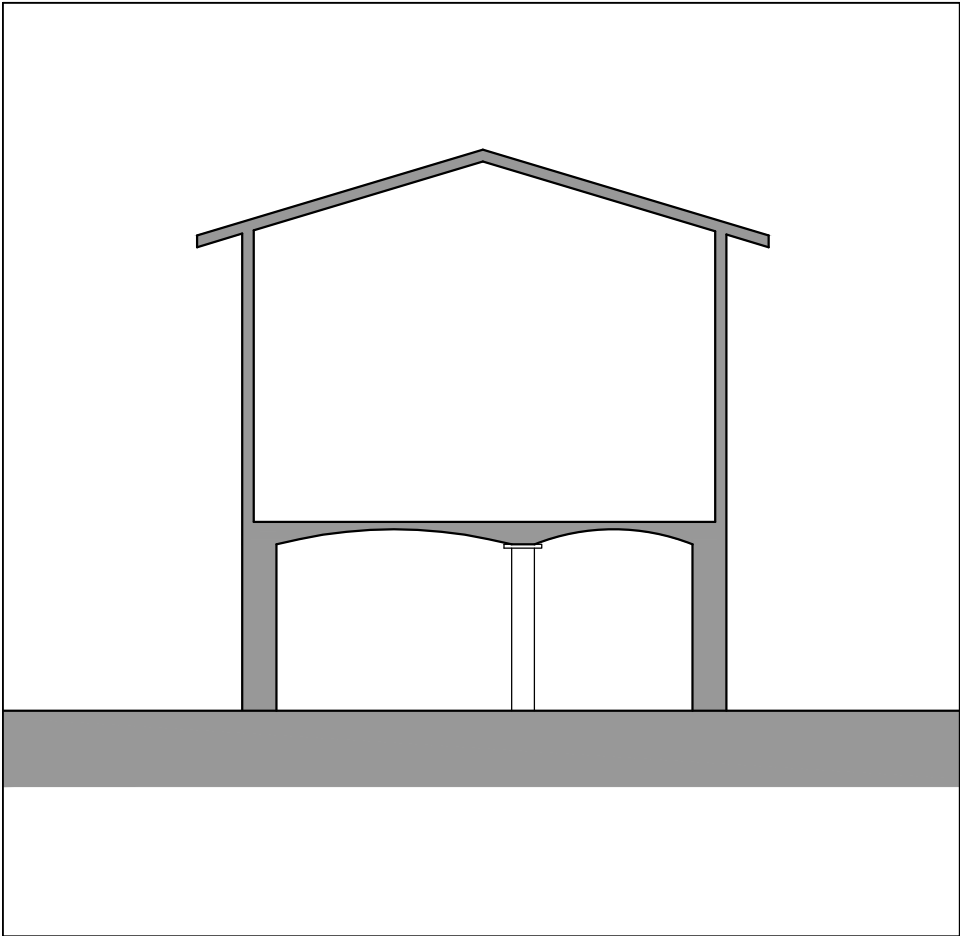
PIANTA PIANO TERRA



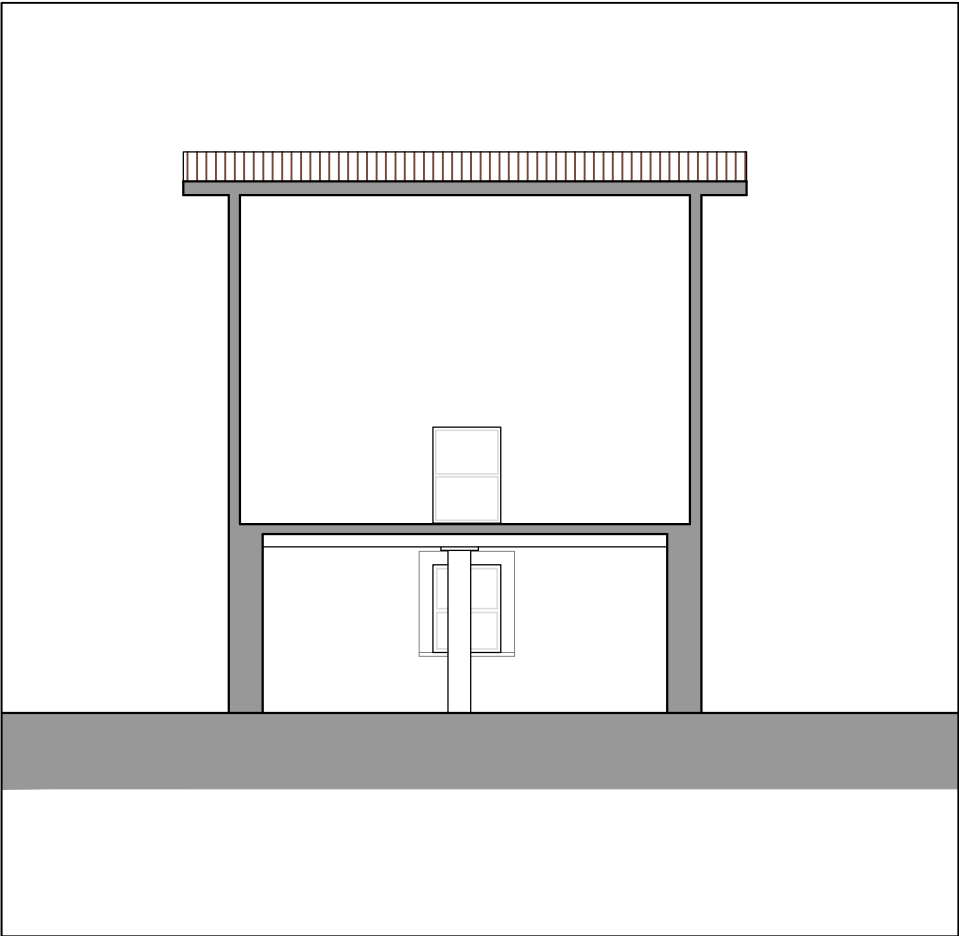
PIANTA PIANO PRIMO



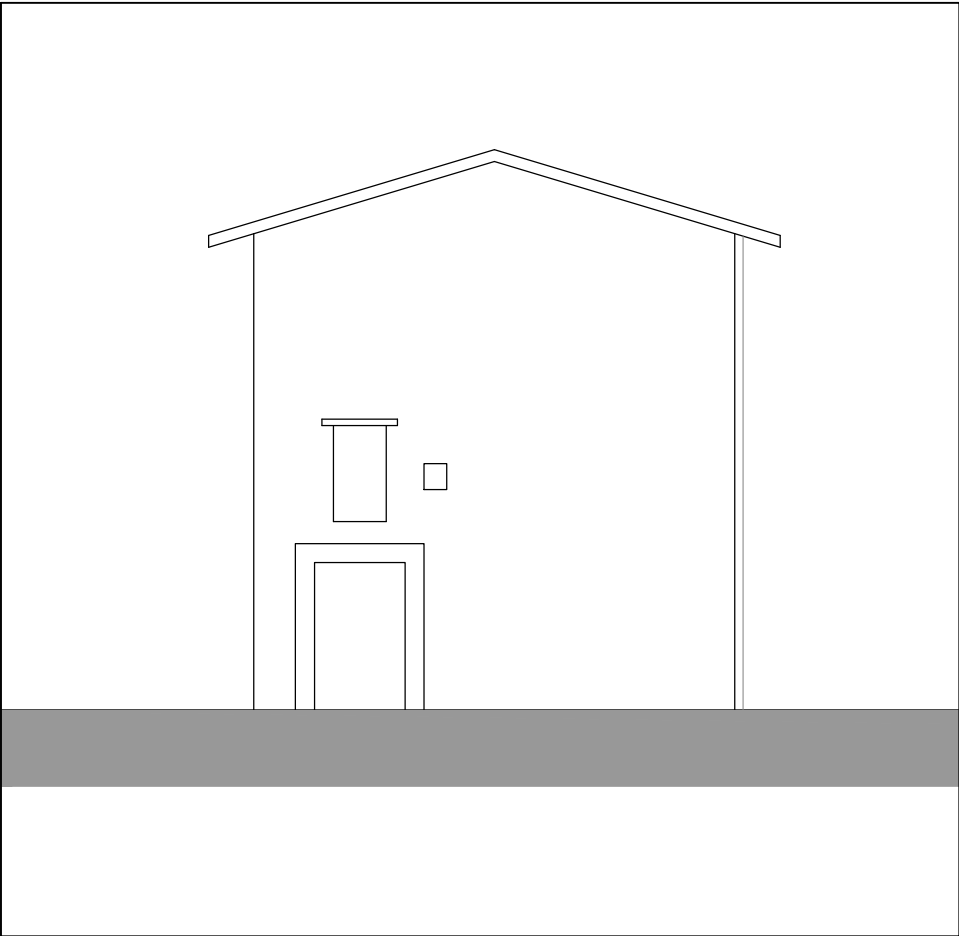
PIANTA DI COPERTURA



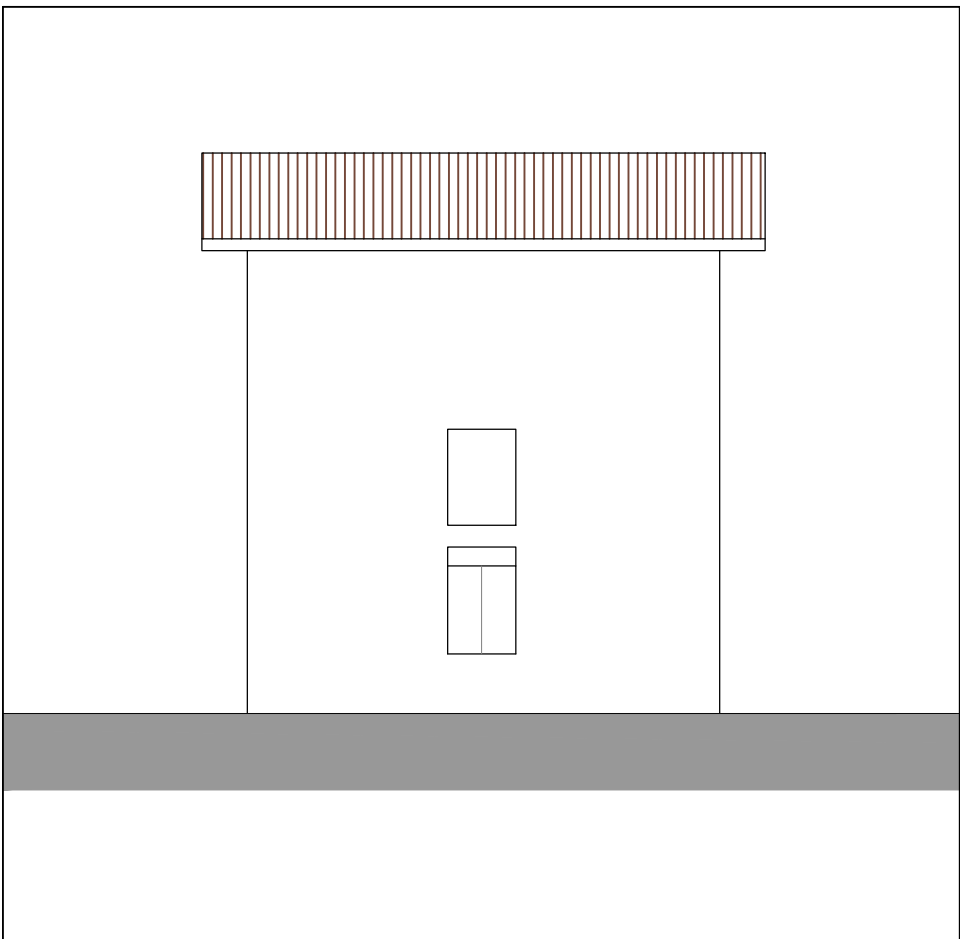
SEZIONE A-A'



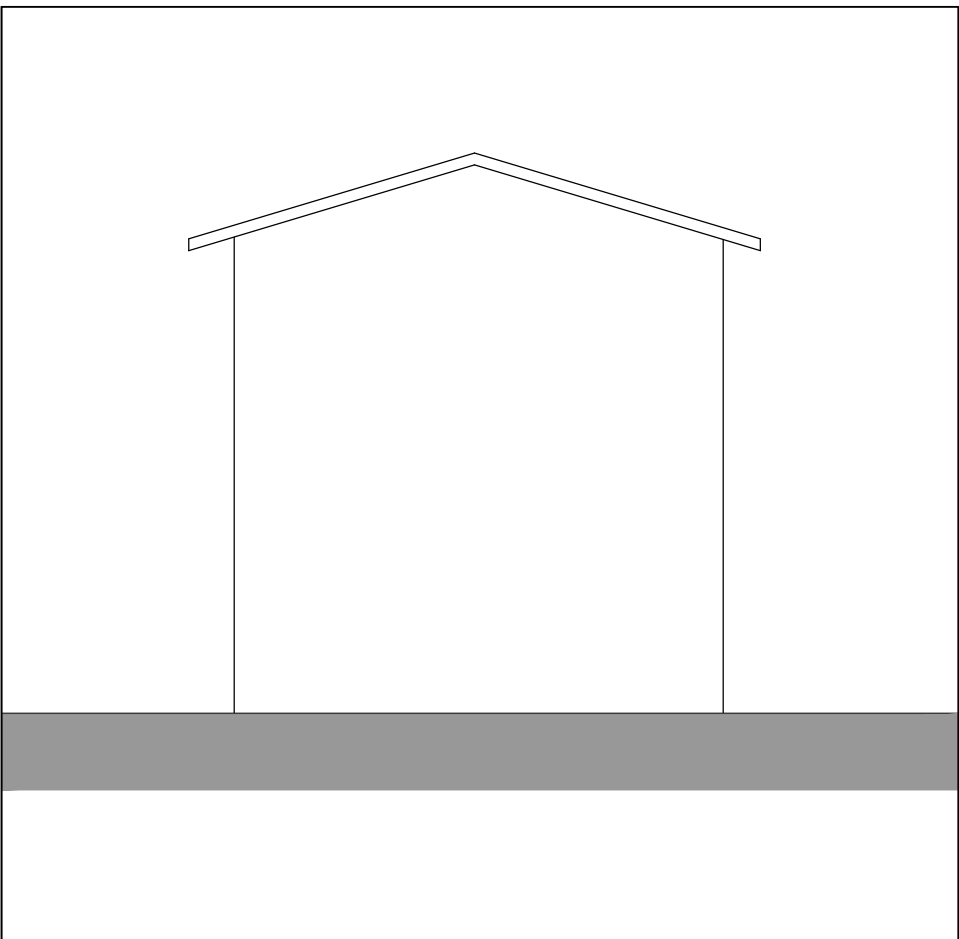
SEZIONE B-B'



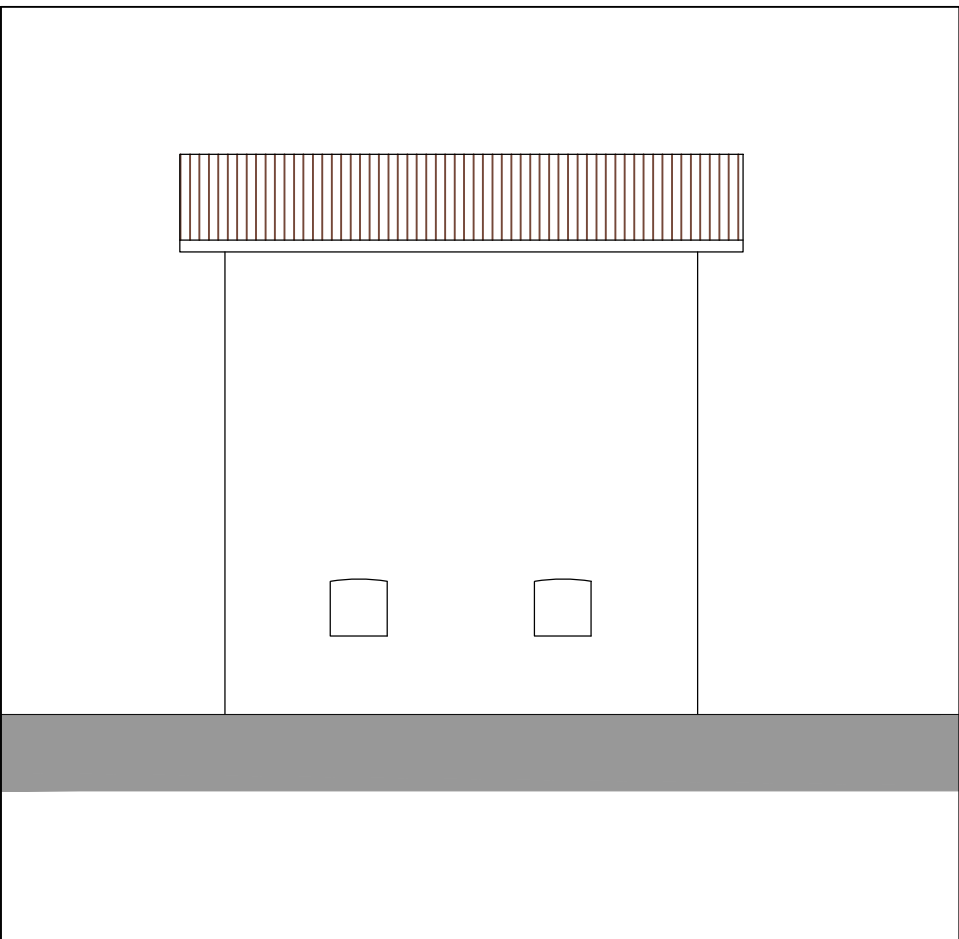
PROSPETTO NORD EST



PROSPETTO SUD EST



PROSPETTO SUD OVEST



PROSPETTO NORD OVEST