

luogo: località Castello di Canossa, Canossa, Reggio Emilia

committente: Canossa San Biagio s.r.l.

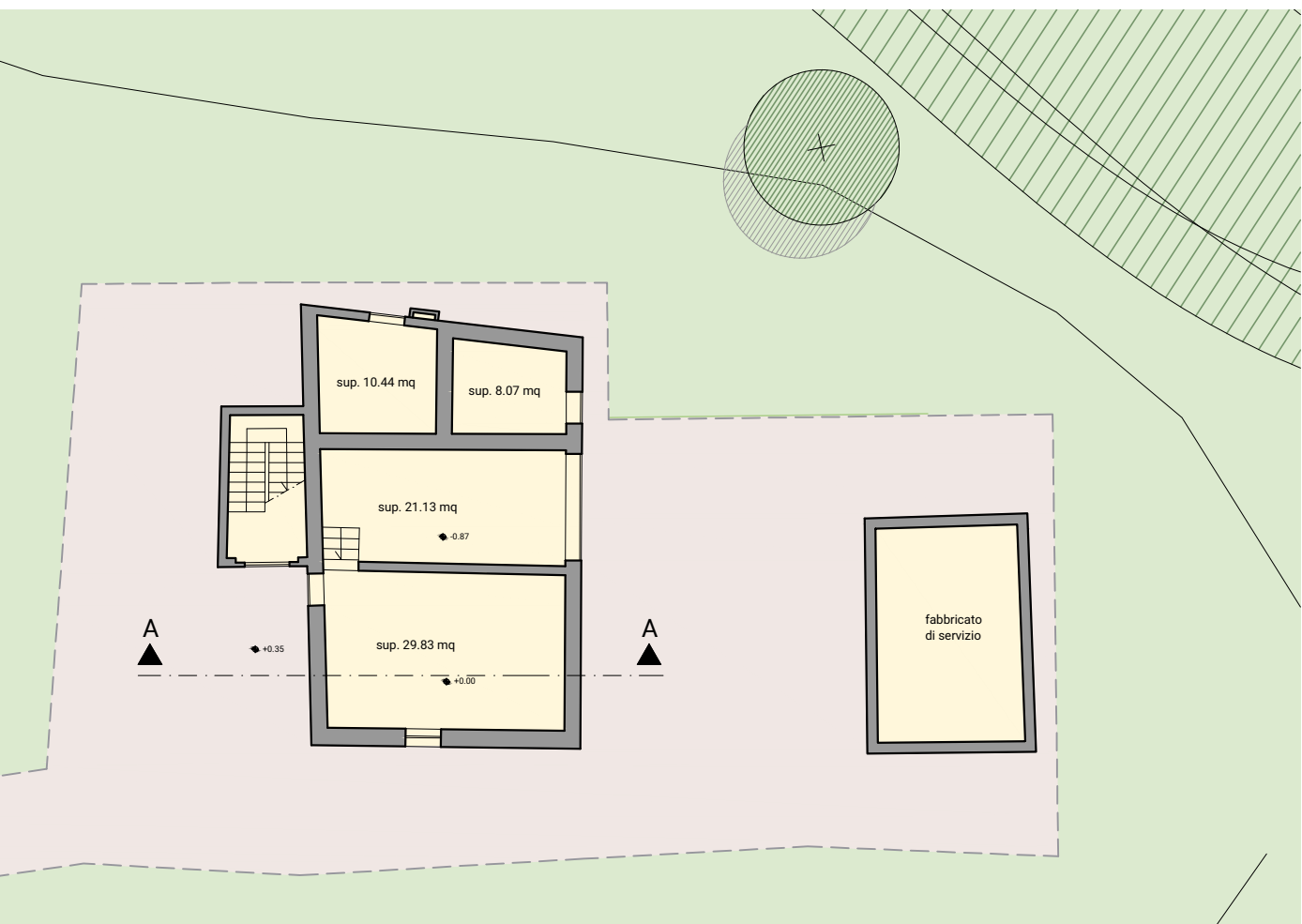
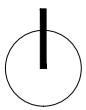
progetto architettonico
ARTEAS PROGETTI
architetto Paolo Soragni
con
architetto Ilaria Manotti
architetto Simone Presti

consulenti
progetto strutturale
ingegnere Pier Guido Bertolotti

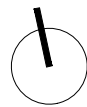
progetto impiantistico
TERMOPROGETTI p.i. Sergio Cantoni
ingegnere Enrico Camellini



PLANIMETRIA scala 1:1000



PIANTA PIANO TERRA

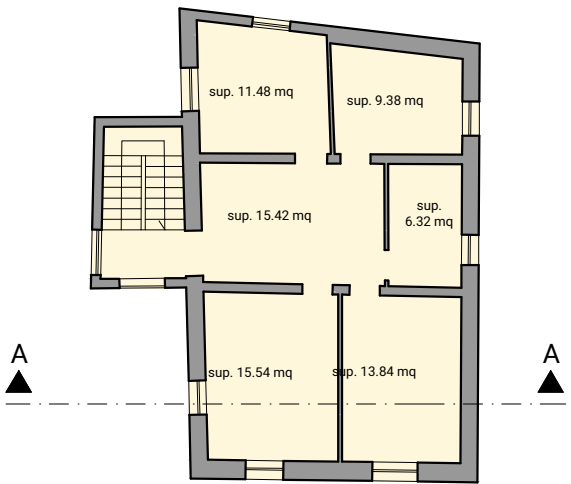


PLANIVOLUMETRICO PER VARIANTE URBANISTICA EX-CASA DEL CURATO

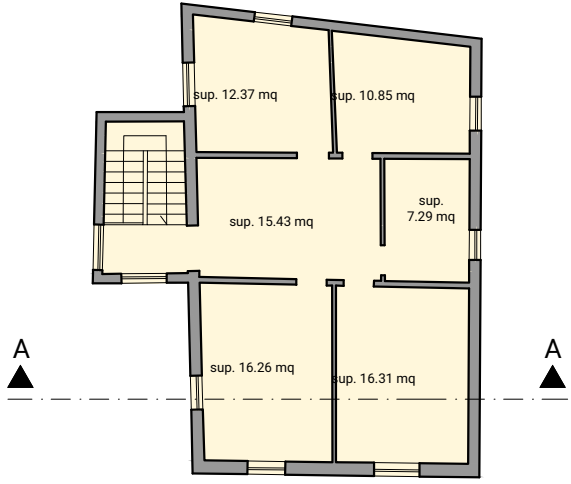
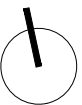
03

stato di fatto
PIANTE
scala 1:200

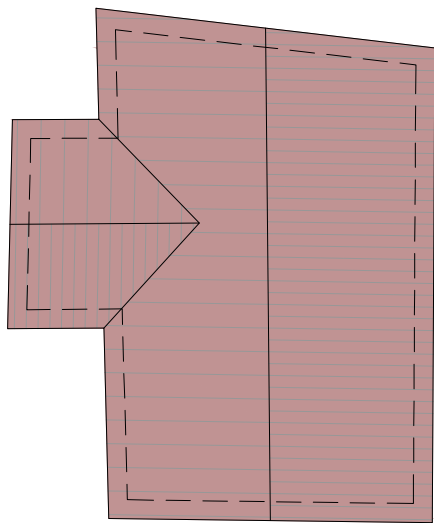
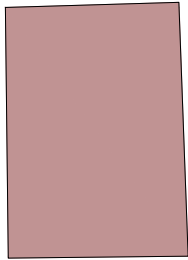
O:\1 Arteas Progetti\2019\14_19 Planivolumetrici Canossa\Progettazione\4 Disegni\4-Casino\VarUrb_Casino AGGIORNAMENTO.dwg
11.2019



PIANTA PIANO PRIMO



PIANTA PIANO SECONDO



PIANTA COPERTURE

